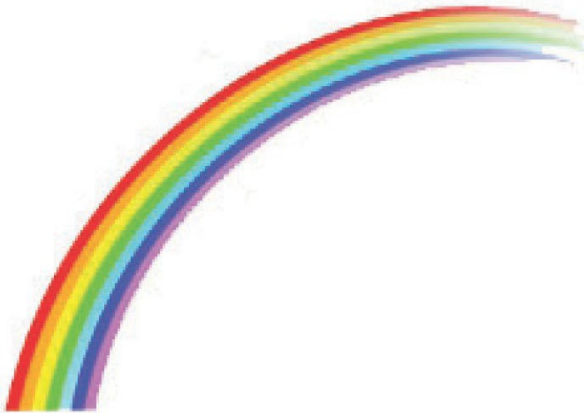


77th Annual Spring Rose Show
East Bay Rose Society Presents:

Rainbow of Roses



SUNDAY MAY 3, 2026
1PM- 5PM
LAKESIDE PARK GARDEN CENTER
666 BELLEVUE AVENUE, OAKLAND, CA

Neither the East Bay Rose Society, Inc. nor the owner or management of the building or places in which the show is presented will be responsible for any loss or damage to exhibits or personal property of exhibitors, although due care will be exercised. All exhibitors are required to remove personal properties at the close of the show.

Rainbow of Roses

2026 SPRING ROSE SHOW *East Bay Rose Society*

TABLE OF CONTENTS

List of Officers	1
Show Committee	2
List of Judges	2
Time Schedule	3
Show Rules and Regulations	4
DIVISION I - Horticulture	
Section A - Challenge Classes	10
Section B - Modern Specimen Classes	16
Section C - Old Garden Rose Specimen Classes	19
Section D - Special Classes	20
DIVISION II - Photography	
Section A – Photography	25

2026 OFFICERS

Martine LaBelle	President
Jolene Adams	Vice President
Margaret Wong	Treasurer
Gerilyn Isman	Secretary
Barbara Thompson	Director – 1 yr
Christina Sheward	Director – 1 yr
Matt Gandin	Director – 2 yrs
Archana Gupta	Director – 2 yrs

East Bay Rose Society

2026 SHOW COMMITTEE CHAIRS

Christina Sheward & Martine LaBelle	Show Co-Chairs
Jolene Adams	Judges
Martine LaBelle	Tally
Matt Gandin	Clerks
Jolene Adams	Schedule
Christina Sheward & Helga Mahlmann	Trophies
Helga Mahlmann	Hospitality
Martine LaBelle	Supplies/Props
Deirdre Ham	Sales

2026 ROSE SHOW JUDGES

Jan Burnham	Chico, CA
Peggy Carlson	Danville, CA
Galand Hallowell	Durham, CA
Martin Kooi	Santa Rosa, CA
Rebecca Shaw	Reno, NV
Helen Zawlik-Moyot	Oakland, CA

*The East Bay Rose Society expresses its sincere appreciation
to our Judges for their contribution to the success of
our Spring Rose Show.*

TIME SCHEDULE

Saturday, May 2, 2026

- 8:30 am Lakeside Garden Center opens for show set-up.
- 1:30 pm When leaving the building, secure all entrance doors.

Sunday, May 3, 2026

- 7:30 am Lakeside Garden Center and Parking are open. Entries start at this time. Parking fee is \$5.00 beginning at 7:30 am.
- 9:30 am All entries are closed. Staging Committee will check to make sure that the entries are ready for judging. Clerks and Judges will assemble for final instructions.
- 10:00 am Judging begins.
- 1:00 pm Show opens for public viewing if judging is completed.
Judges Luncheon
- 4:15 pm Awards Ceremony – top trophy winners will be announced at this time.
- 5:00 pm **Show closes.** Volunteers' Drawing is held. Exhibitors may retrieve their exhibits **after** closing when the show is dismantled.
All property will be stored in their proper locations.
Please stay and help clean up the Center.
- 6:30 pm Lakeside Garden Center is locked.

East Bay Rose Society, Inc.

SHOW RULES AND REGULATIONS

This show is organized, sanctioned and judged in accordance with the rules of the American Rose Society and of the East Bay Rose Society, Inc. The ARS Official Scale of Points will be used for judging Challenge, Horticulture and Photography entries.

All Horticulture entries will be made in alphabetical order in each class. The first letter of the rose name will determine placement in each class unless otherwise specified in this Schedule. Every rose variety for which there are one or more entries will constitute a separate sub-class.

Only one ARS first, second, third place or honorable mention may be awarded in each alphabetical sub-class, where the varieties are the same. Classes calling for mixed varieties (3 stems mixed varieties, all Challenge and Special classes, etc.) may receive multiple first, second and third place awards. One Best of Class or Section as well as the appropriate certificates and trophies will be chosen from all blue-ribbon winners in each of these classes.

Judges may withhold ribbons, certificates and trophies at their discretion. The decision of the Judges is final once the Show is closed.

Entries may be disqualified if:

- A “foreign” substance has been applied to enhance the beauty of the specimen.
- A rose is misnamed (not the variety written on the tag).
- Unlabeled or mislabeled (no exhibitor name, no class number, or no rose name on the tag).
- An entry is not grown outdoors, or by the exhibitor.
- Exhibitor’s name is visible at the time of judging.
- A Challenge Class entry does not satisfy the requirements of said Class.

- Separate entries from the same garden by two or more exhibitors.

Perpetual trophies remain the property of the *East Bay Rose Society, Inc.*

EXHIBITORS

1. Competition is open to any members of ARS, any Local Rose Society, Garden Club or affiliated horticulture group. The general public may exhibit only in the Novice classes.
2. Judges' Classes are open to Judges of this Show only.
3. Novice sections are open to Novices and the public only. A Novice in Horticulture is an exhibitor who has not won either two blue ribbons or a trophy in any ARS-sanctioned Rose Show (anywhere!). Novices may also enter roses in all other sections of the show except the Judge's classes. This rule does not pertain to Monthly/Little Rose Shows held during a regular rose society meeting.
4. Youth classes are open to those under 18 years of age. Youths may also enter roses in all other sections of the show except the Judge's classes.
5. Roses must have been grown in the exhibitor's outdoor garden and entered in the name of the exhibitor. Exhibitors who share a garden must enter as one exhibiting team in the Horticulture, Challenge and Special classes. Photos must be taken by the exhibitor.

ALL HORTICULTURE EXHIBITS

6. Exhibits must be removed at the close of the Show.
7. Entry tags, vases, bowls, boxes, frames and palettes will be supplied by EBRS, on a first-come, first-served basis unless

otherwise specified. Exhibitor-owned vases, bowls, boxes, frames and palettes must be constructed according to ARS standards or approved by the Show Chair.

8. Large entry tags are to be used for large rose entries (HT, Gr, Fl, Pol, LCI, S, OGR). Small entry tags are to be used only for small roses (Min, MinFl) and Photography entries. Entry tags must be complete; both halves must be filled out. Roses must be correctly identified. Tags should be correctly folded so exhibitor's name will not show during judging.
9. Exhibitors are allowed as many entries in each class as the Schedule permits, however only one entry in any Challenge or varietal sub-class. **Multiple entries in restricted classes will be disqualified.**
10. Polyanthas and their climbing forms are exhibited only as sprays of two or more blooms.
11. One bloom per stem entries
 - a. Hybrid Tea, Grandiflora, Floribunda, Miniature, Miniflora entries: if torn petals or side buds are present the entry may be penalized at the level of distraction.
 - b. Singles (4-8 petals or classified as Singles) of Hybrid Teas, Miniatures, Minifloras, Climbers, Shrubs, Old Garden Roses may be shown with or without side buds, whichever makes the better exhibit.
 - c. Shrub Roses and Old Garden Roses may be exhibited as sprays or as one bloom per stem, and side buds are allowed.
 - d. Sprays of two or more blooms may also include green buds if they are not distracting.
12. Shrub Roses are divided into two groups: Classic Shrubs with a family lineage (i.e., H. rugosa, H. kordesii, H. musk,

H. moyesii, etc.) and Modern Shrubs, introduced in this and the previous century as landscape (S), ground cover (Gc), and English-style (Eng). These may be entered in the specific class for that family of shrubs and may be exhibited stem-on-stem in the Shrub Class. Austin roses and Hulthemias are also Modern Shrubs and denoted “S” for Shrub in the *Handbook for Selecting Roses* (pg 12).

13. Old Garden Roses are types or classifications of roses established (ARS acceptable evidence of existence) prior to the date of the first commercially successful Hybrid Tea – 1867. There are classes for cultivars introduced “Prior to 1867” and “1867 and After”, and a “Genesis Class” for Species roses. All roses entered into these classes must be Old Garden Roses as classified in the 2026 *Handbook for Selecting Roses*.
14. Wedges are permitted but should not protrude above the lip of the container and the degree of distraction. Exhibitors must remove their wedging material from the vases at the end of the show.
15. Exhibition Form is defined as that form expected of a Hybrid Tea – a high, pointed center with a circular outline of the petals as they unfold. Example: ‘Gemini’.
16. Exhibition Stage is defined as any form in which a particular cultivar displays the most perfect phase of beauty for that rose. Example: ‘Marriota’. These roses are not capable of showing exhibition form.
17. No exhibits, entry tags, containers, or awards may be removed before the close of the show except by the Show Chairman. Ribbons, certificates and trophies may be collected at the end of the Show.

18. All entries must be in place by the time set forth in the Time Schedule (page 3). It is the exhibitor's responsibility to place their entries in the proper classes.

PHOTOGRAPHY CLASSES

19. Photos must be taken of horticulture specimens in the garden. All roses shown in photography entries must have been grown in an outdoor garden. All roses in the photo must be listed on the small entry tag - except the roses in a garden photograph (5P), or in creative interpretation (4P) do not need to be identified.
20. Photographs must be 8" x 10" and mounted (using a backing board or art board or foamboard of mat size) and matted (the 11" x 14" frame that goes on top of the photo) for display on the photography stands. Orientation may be portrait or landscape. Mat may be any color, mat opening may be any shape (oval, diamond, square, etc.) as long as it conforms to mat and photo size. **Matting that distracts** is grounds for penalization.
21. Please notify the Show Chair (Martine LaBelle or Christina Sheward) by SUNDAY, APRIL 26 of the number of photo entries you plan to enter.
22. A photograph may not be entered more than once. If entered in multiple classes, all entries of that photo will be disqualified. Photos that have won in a previous photo competition are not eligible for entry in this show.
23. A novice photographer is an exhibitor who has never won a blue ribbon in the photography section of an American Rose Society national, district, or local rose society photography show, or in the ARS Digital Photography Contest.

24. Small horticulture show tags must be completely filled out. If the photo is of “exhibitor grown” roses, “EG” must go on the top right corner to qualify to win an ARS medal certificate. Folded tags are paper clipped to the upper left front corner (placement of tag indicates photo orientation).
25. All rights to these entries are retained by the owners of the photographs. Your entry indicates that you own the copyright and that you are not legally prohibited from submitting it to the contest. By entering you agree to allow *East Bay Rose Society* to publicly display and publish the photo with appropriate credits.

ROSE AND PHOTO JUDGING

26. The Judges will select the Best of Show winner from all horticulture Award Winners on the Trophy table, excluding the Kings and Princesses.
27. Horticulture specimens and collections will be judged in accordance with the *Guidelines and Rules for Judging Roses*. Photography entries will be judged in accordance with the *Guidelines and Rules for Judging Rose Photography*.
28. Rose types and exhibition names will be determined by the **Modern Roses** database on the web, *Modern Roses 12*, the *ARS Official List of Approved Exhibition Names*, the *ARS Handbook for Selecting Roses 2023*, and the current *Combined Rose List*. Details, especially of Old Garden Roses prior to 1867, should be double-checked in **Modern Roses** or **HelpMeFind**.
29. During the judging, no one will be permitted on the show floor except those authorized by the Show Chair.

30. The Show Chair will be responsible for interpreting the Schedule and enforcing the Rules and Regulations of the Show.

DIVISION I
SECTION A - CHALLENGE CLASSES

All varieties must be identified on the Challenge entry tag. Containers are furnished by EBRS unless otherwise specified. **Only one entry per exhibitor or garden is allowed in each class.**

SCORECARD FOR CHALLENGE CLASSES IN AMERICAN ROSE SOCIETY ROSE SHOWS	
Horticulture Excellence of the Individual Specimens	80 %
Overall Appearance of the Exhibit	20 %

CLASS 1 OLD GARDEN ROSE BOUQUET

East Bay Rose Society Keeper Trophy and EBRS Certificate

Five or more stems (blooms or sprays) of Old Garden Roses – before and/or after 1867 in one vase. Container to be furnished by the exhibitor, preferably something old. List of names and varieties with their classifications to be written on the Challenge entry tag.

CLASS 2 FIVE HYBRID TEAS — SAME COLOR CLASS

Morrill Perpetual Trophy

Five same color class Hybrid Tea blooms (need not be of the same variety) in one container.

CLASS 3 AS YOU LIKE IT

Wilson Keeper Trophy

David Austin English (Eng.) shrub blooms. Five stems of Austin Shrub blooms, same or mixed varieties, in one vase. Container may be provided by the exhibitor.

CLASS 4 FIVE MINIATURE OR MINIFLORA ROSES

Grogan Perpetual Trophy

One-bloom-per-stem, same color class, can be same or mixed varieties or types. To be exhibited in one container which may be furnished by the exhibitor.

CLASS 5 MIXED THREESOME

Ellen S. Leloy Memorial Perpetual Trophy

Three one-bloom-per-stem roses, exhibited in one container. Each rose must be

(a) of a different ARS color class; and ...

(b) from a different horticultural classification (Hybrid Tea, Grandiflora, Floribunda, Miniature, Miniflora, Polyantha, Large-flowered Climber, Shrub, Old Garden Rose).

Entries are judged on the quality of the individual cultivars and the overall appearance of the entry.

CLASS 6 LIGHT-PINK CHALLENGE

John Paul Edwards Perpetual Trophy

Three one-bloom-per-stem entries, large roses, without side buds. Exhibition stage. Exhibited in one container. Need not be of one variety. Must all be in the “lp” color class.

CLASS 7 THREE RED HYBRID TEA ROSES

Shiraki Perpetual Trophy

Exhibited in one container. Exhibition form. The roses must not be a red-blend. Either all three of same variety, or else three different varieties.

CLASS 8 THREE STAGES OF THE ROSE — LARGE

Newton Perpetual Trophy

Three stems of one large rose variety (Hybrid Tea, Grandiflora, Floribunda, Shrub, Climber), each to be one bloom per stem. An opening bud with sepals down and a few petals starting to unfurl, a bloom at exhibition stage, and a fully open bloom with stamens showing at the time of the judging. Exhibited in one container.

CLASS 9 THREE STAGES OF THE ROSE — SMALL

East Bay Rose Society Perpetual Trophy

Three blooms of one variety, Miniature or Miniflora, without side buds — an opening bud with sepals down and only a few petals starting to unfurl, a bloom at exhibition stage, and a fully open bloom with stamens showing at the time of the judging. Exhibited in Miniature Stages Block furnished by EBRS.

CLASS 10 HI / LO

Reflections Perpetual Trophy and ARS Certificate

One large bloom (HT, Gr, Fl, S, LCl) and one small bloom (Min or MinFl), exhibition blooms, **each in its own vase or in the EBRS Reflections Box**, exhibited with smaller rose in front of the larger rose. Stem length of the large rose may be adjusted to complement the small rose. Must show stem and foliage of exhibition quality.

CLASS 11 ROSE OF BRITISH EMPIRE ORIGIN

Covell Founders Award Perpetual Trophy

Hybrid Tea, one bloom per stem, without side buds. Winner is eligible to compete for Queen of Show. Exhibition form. Entries must be from breeders/hybridizers in the British Empire (UK, Canada, India, Bermuda, Australia, New Zealand). ARS approved exhibition names.

CLASS 12 PRIDE OF OAKLAND

Merle Andrus Memorial Trophy

One stem spray entry of the Floribunda rose ‘Pride of Oakland’. Winner also eligible for *Lisherness Trophy* (Queen of FL Sprays) and *ARS Floribunda Spray Medal Certificates*.

CLASS 13 LARGE PICTURE FRAME

McColgan Perpetual Trophy

One bloom per stem, any large-flowered variety, exhibited in an orchid tube attached to a black velvet background in a picture frame. No foliage. Picture frame provided by EBRS on a first-come, first-served basis.

CLASS 14 SMALL PICTURE FRAME

East Bay Rose Society Keeper Trophy and EBRS Certificate

One bloom per stem, Miniature or Miniflora, exhibited in an orchid tube attached to a black velvet background in a picture frame. No foliage. Picture frame provided by EBRS on a first-come, first-served basis.

CLASS 15 ENGLISH-STYLE BOX — SMALL

East Bay Rose Society Perpetual Trophy and ARS Certificate

Six Miniature and/or Miniflora blooms, one or mixed varieties. No stem or foliage visible, displayed in a properly constructed Small

English Box provided by exhibitor or by EBRS on a first-come, first-served basis. Exhibition form.

CLASS 16 SMALL ROSE PALETTE

Salter Perpetual Trophy

Five Miniature or Miniflora roses, one bloom per stem, **each a different color class**, exhibited in a properly constructed palette to resemble the paints on an artist's palette. Palette provided by EBRS on a first-come, first-served basis or by the exhibitor. No stems or foliage visible.

CLASS 17 MINIATURE ROSE IN A BOWL

Ruby Cayere Perpetual Trophy and ARS Certificate

One Miniature bloom at exhibition stage without foliage or stem, displayed in a clear glass bowl of clear water. The container furnished by the exhibitor or EBRS.

CLASS 18 MINIFLORA ROSE IN A BOWL

East Bay Rose Society Keeper Trophy and ARS Certificate

One Miniflora bloom at exhibition stage without foliage or stem, displayed in a clear glass bowl of clear water. The container furnished by the exhibitor or EBRS.

CLASS 19 LARGE ROSE IN A BOWL

East Bay Rose Society Perpetual Trophy and ARS Certificate

One Hybrid Tea or Grandiflora bloom, exhibition form without stem or foliage, placed in a clear bowl of clear water. Container of sufficient size to accommodate the bloom furnished by EBRS or the exhibitor. Bloom must be floating.

CLASS 20 BOWL OF BLOOMS

East Bay Rose Society Keeper Trophy and EBRS Certificate

Five to seven large blooms at exhibition stage, without stem or foliage, floating in a clear glass low “lily” bowl of clear water. Any varieties or colors, mixed or matched. **Container furnished by EBRS.**

CLASS 21 TEA PARTY BLOOMS

East Bay Rose Society Keeper Trophy and EBRS Certificate

Eight or more small roses (Mini, Miniflora, Polyantha), exhibited in a teacup with saucer provided by the exhibitor. Oasis permitted, rose foliage permitted but must not be distracting.

CLASS 22 A ROSE BOUQUET FOR YOUR HOME

East Bay Rose Society Keeper Trophy

A bouquet you would be happy to see in your home: up to seven stems of any combination of large-flowered roses, in your own or an EBRS transparent or clear vase so stems are visible. Any combination of sprays and one-bloom per stem. Roses only; no other flowers, added foliage or ancillary material.

CLASS 23 THEME CHALLENGE: *Rainbow of Roses*

East Bay Rose Society Keeper Trophy and EBRS Certificate

One stem (a spray or one bloom) of any rose that showcases amazing color to reflect the theme.

SECTION B - MODERN SPECIMEN CLASSES

All varieties must be identified on the entry tag. Vases furnished by EBRS.

OFFICIAL SCORECARD FOR HORTICULTURE CLASSES	
Form 25 points	Stem & Foliage 20 points
Color 20 points	Balance & Proportion 10 points
Substance 15 points	Size 10 points

HYBRID TEAS, GRANDIFLORAS, AND THEIR CLIMBING FORMS

Allowed: Stem on Stem

Class 100 One bloom per stem. Cultivars with 4 - 8 petals (Singles) not eligible. Eligible for HT/GR Court.

Class 110 Three stems of Hybrid Tea, one bloom per stem, same variety, in one vase. Cultivars with 4 - 8 petals (Singles) not eligible. *Salles Perpetual Trophy* awarded for best exhibit in Class.

Class 120 One Hybrid Tea spray, two or more exhibition blooms on one stem. *ARS Certificate* for best entry in Classes 120 and N-1 (if Hybrid Tea). Singles not eligible.

Class 130 One Grandiflora spray, two or more exhibition blooms on one stem. *ARS Certificate* awarded for best entry in Classes 130 and N-1 (if Grandiflora).

McKenney Trophy awarded for the best Hybrid Tea or Grandiflora Spray from Classes N-1, 120 and 130.

Class 140 Decorative Hybrid Tea, one bloom per stem. Only varieties that cannot normally present hybrid tea 'exhibition form'. Varieties known to show exhibition form will not be eligible. (Singles not eligible). *EBRS Certificate*.

First place winners from Class 11 (if exhibition-form HT or GR), 100, N-1 are eligible to compete for Queen of Show and ARS Medal Certificates.

FLORIBUNDAS AND THEIR CLIMBING FORMS

Allowed: Stem on Stem

Class 200 One bloom per stem, exhibition stage. *LaBelle Trophy* and *ARS Certificate* awarded for best entry from Classes 200 and N-1 (if Floribunda one bloom).

Class 210 One stem spray, any form. *Edwin Lisherness Perpetual Trophy* and *ARS Floribunda Spray Queen, King and Princess Certificates* awarded for best entries from Classes 12, 210 and N-1 (if Floribunda Spray).

Class 220 Three sprays, same variety, any form. *Andrus Perpetual Trophy* awarded for best entry.

POLYANTHAS

Allowed: Stem on Stem

Class 300 One stem spray. *ARS Certificate* awarded for best entry. *EBRS Perpetual Trophy*.

MINIATURE ROSES AND THEIR CLIMBING FORMS

Class 400 One bloom per stem, Miniature, exhibition form. Cultivars with 4 - 8 petals (Singles) not eligible.

Martinez Perpetual Trophy, ARS Medal Certificate.

Class 410 One stem spray, Miniature, with at least 2 exhibition form blooms. Cultivars with 4 - 8 petals (Singles) not eligible. *Oberlies Perpetual Trophy, ARS Certificate* for best entry.

First place winners from Classes 400 and N-2 (if Miniature) are eligible to compete for Miniature Queen of Show and ARS Medal Certificates.

MINIFLORA ROSES AND THEIR CLIMBING FORMS

Class 500 One bloom per stem, exhibition form. Cultivars with 4 - 8 petals (Singles) not eligible. *Adams Perpetual Trophy.*

Class 510 One stem spray with at least 2 exhibition form blooms. Cultivars with 4 - 8 petals (Singles) not eligible. *ARS Certificate* and *EBRS Keeper Trophy* for best entry.

First place winners from Classes 500 and N-2 (if Miniflora) are eligible to compete for Miniflora Queen of Show and ARS Medal Certificates.

CLIMBERS

Large-flowered Climbers, Hybrid Gigantea, Hybrid Wichurianas only. Spray or one bloom per stem, whichever makes the better exhibit.

Class 600 One stem. *Curtis McCrury Perpetual Trophy* and *ARS Certificate* for best entry.

SHRUBS

One spray or one bloom per stem, whichever makes the better exhibit. May be exhibited stem-on-stem.

Class 700 One stem. “Classic” shrubs from known Old Rose families to include HMoy, HMks., MRg., and Kor. *Grogan Perpetual Trophy* and *ARS Certificate* awarded for best entry.

Class 710 One stem. Modern shrubs. Marked “Eng”, “Gc”, or “S” *Lisherness Memorial Trophy* and *ARS Modern Shrub Medal Certificates*.

SECTION C

OLD GARDEN ROSE SPECIMENS

Old Garden Roses are classes of roses established prior to the introduction date of the Hybrid Tea ‘La France’ in 1867. At least one cultivar in each class dates to before 1867. The cultivars themselves are of mixed or unknown dates. See the *Handbook for Selecting Roses*, or the Modern Roses Database on the ARS website for detailed information.

SPECIES ROSES

(Marked “Sp” in the *Handbook for Selecting Roses*)

Class 800 Species rose, one bloom per stem or one spray. Best entry is eligible for *ARS Genesis Award*.

CULTIVARS INTRODUCED BEFORE 1867

Class 810 One stem (one bloom or one spray). Best entry from Classes 810 and N-3 (if a “dowager eligible” cultivar) is eligible for *ARS Dowager Queen Certificate* and *Malcolm Trophy*.

CULTIVARS INTRODUCED 1867 & AFTER

Class 820 One stem (one bloom or one spray). Species cultivars not eligible. Best entry from Classes 820 and N-3 (if a “Victorian eligible” cultivar) is eligible for *ARS Victorian Award* and *Martinez Trophy*.

SECTION D SPECIAL CLASSES

A FRAGRANT DELIGHT

(Not eligible for People’s Choice)

Based on fragrance alone. Entry does not have to have exhibition form, but it must have petals and leaves. *Sanders Perpetual Trophy* and *ARS Certificate* awarded to the best bloom from Class F-1 and Class F-2. Not eligible for Best of Show or People’s Choice. Multiple entries allowed if different varieties.

Class F-1 One stem entry, one bloom per stem, any large rose (Hybrid Tea, Grandiflora, Floribunda, Polyantha, Climber, Shrub, Old Garden Rose). *EBRS Certificate*

Class F-2 One stem entry, one bloom per stem, any small rose (Miniature, Miniflora). *EBRS Certificate*

NOVICES

Novice Silver Bowl Perpetual Trophy for best overall entry from these Classes. Best of each class are eligible to compete for Queen, ARS Medal Certificates and Perpetual or Keeper trophies. Multiple entries allowed if different cultivars.

Class N-1 Large rose at exhibition stage for that type of rose (Hybrid Tea or Grandiflora, Shrub, Floribunda, Polyantha, Climber). One bloom per stem.

Class N-2 A small rose at exhibition stage (Miniature, Miniflora).
One bloom per stem.

Class N-3 Old Garden Roses. One bloom or spray, any date.

Class N-4 Sprays. One stem, any type of rose.

OPEN BLOOM CLASSES

Bloom must be clean and naturally open with stamens showing.
One entry per class per garden.

Class O-1 Fully open Hybrid Tea or Grandiflora bloom. Cultivars with 4 - 8 petals (Singles) not eligible. *ARS Certificate* for best entry if HT; *EBRS certificate* if GR.

Class O-2 Fully open Miniature bloom. Singles not eligible. *ARS Certificate* for best entry.

Class O-3 Fully open Miniflora bloom. Singles not eligible. *ARS Certificate* for best entry.

Class O-4 Fully open bloom of a Shrub, Climber, Polyantha, Old Garden Rose. Singles not eligible. *EBRS Certificate* for best entry.

QUEENS' "SMACKDOWN"

Former Queens from our rose show history only. **See listing on back cover.** Judged on the standard for a blue ribbon in that particular class. Multiple entries allowed if different varieties. Floribunda entry must be a spray (a "Best" before 2007 or a Floribunda Spray Queen).

Class Q-1 One stem – May the best Queen Reign! *EBRS Keeper Trophy* and *EBRS Certificate* for best entry.

FOR SINGLES ONLY

"Single" roses naturally have only 4 to 8 petals or are classified as Singles in the *Handbook for Selecting Roses* or in *Modern Roses*. *ARS Certificate* for best of each class. Multiple entries allowed of different cultivars per garden per class.

Class S-1 One bloom per stem or one spray, large "Single" (HT, Gr, Fl, Climber, Polyantha, Shrub, Old Garden Rose). *EBRS Perpetual Trophy if best is HT.*

Class S-2 One stem, Miniature Single, or one spray.

Class S-3 One stem, Miniflora Single, or one spray.

THE TRIPLE WHAMMY

Class W-1 Three stems of the same cultivar in one vase. Old Garden Rose (any date of introduction), or Hybrid Tea, Grandiflora, Large-Flowered Climber, Polyantha or Shrub. Multiple entries allowed if different cultivars. *EBRS Keeper Trophy and EBRS Certificate.*

Class W-2 Three stems of the same cultivar in one vase. Miniature, Miniflora. Multiple entries allowed if different cultivars. *EBRS Keeper Trophy and EBRS Certificate.*

YOUTH

Melody Perpetual Trophy for best overall entry from these Classes. Eligible for People's Choice. Multiple entries allowed if different cultivars. *ARS Certificate* for best of each class.

Class Y-1 One rose at exhibition stage (Hybrid Tea, Grandiflora, Floribunda, Polyantha, Miniature, Miniflora, Shrub, Climber, OGR). One bloom per stem.

Class Y-2 A spray of roses on one stem – any type of rose.

“YIPES! STRIPES!!” CLASSIC

Striped roses come in all shapes and sizes, and in most classes of roses. One entry per garden.

Class Z-1 One stem, one-bloom per stem or spray, **any** rose, large or small, showing stripes as a normal color pattern for the variety. *EBRS Certificate.*

JUDGES INVITATIONAL COMPETITION

Five entries per individual Judge in each class, maximum. You may enter all Judge's classes. *ARS Certificate* and *Judges Keeper Trophy* for best entry from Classes J-1 through J-8.

Class J-1 Hybrid Tea or Grandiflora. One bloom per stem.

Class J-2 HT/GR spray, two or more blooms.

Class J-3 Floribunda, one bloom per stem, HT exhibition form.

Class J-4 Floribunda or Polyantha spray. Any form.

Class J-5 Miniature or Miniflora. One bloom per stem.

Class J-6 Miniature or Miniflora spray, exhibition form, two or more blooms.

Class J-7 OGR. One stem, class established prior to 1867.

Class J-8 Shrub or LCl. One bloom per stem or one stem spray.

Class J-9 Rose Photography. Choose any one of the Photography classes, enter your rose photos as **J9-1P**, **J9-2P**, etc. EBRS Certificate for best entry.

DIVISION II
SECTION A – ROSE PHOTOGRAPHY

OFFICIAL SCORECARD FOR PHOTOGRAPHY CLASSES			
Conformance	5 pts	Technique	15 pts
Composition	15 pts	Distinction	15 pts
Adheres to Specific Section Criteria 50 pts			

Only two entries per exhibitor allowed in each class.

Conformance means following the rules. Specific Section means the rules for the horticulture class of the rose being photographed, Composition includes the point of interest (which should be the rose), simplicity, color quality, contrast, balance, framing of the subject, viewpoint, direction of movement and diagonals.

Technique includes correct exposure, depth of field, lighting and other technical aspects involved in taking the photo. Distinction indicates that everything about the photograph is well done and there is something about the photograph that sets it apart.

Roses should dominate in photographs of gardens. The rules that apply to the horticultural submission apply to photography.

Any photo showing photo editing software was used for any reason other than cropping, rotation, lightening, darkening, minor clean up, corrections for camera sensor dirt, or sharpening of the image may be penalized. Petals dropped off the frame will be penalized unless the entry is in Creative Interpretation or Macro Classes.

Class 4P is the exception to this rule.

ARS Gold, Silver, Bronze Certificates and Photography Rosettes will be awarded for Queen, King and Princess of Photography Entries. Tag must show “EG” to qualify for medal certificates but not for rosettes.

Class 1P One bloom, side buds will be penalized to the level of distraction. Any type of rose designated as “single” (e.g. Single HT) (4 to 8 petals or officially classed “single”) must be entered in Class 3.

Class 2P One spray
Two or more blooms, any type of rose.

Class 3P Fully open bloom
One bloom, stamens must show. “Singles” (4 to 8 petals or officially classed “single”) are permitted in this class.

Class 4P Creative interpretation
The photograph should demonstrate originality and creativity. This includes processes used to alter the original image like blurring, colorizing, texturing, dodging, burning, dithering, painting, layering, shadowing, cloning, filtering, merging, cropping. Composites, portions of roses, roses with petals cut off, camera-less photographic techniques such as scanning may be included in this class. Color, Black & White, Sepia, or combinations of these are permitted. Photo enhancement software is permitted in this class. The photographer is allowed and encouraged to utilize the full range of tools and processes to express their vision in the creation of rose art. The creative naming of the exhibit is part of the creative interpretation of the exhibit.

Class 5P Public or Private Rose Garden
Photographs should show the use of roses within the structure of a garden, which can be widely variable. Roses should dominate the photograph, and some layout of the garden should be visible. The name of any public rose garden **MUST** be listed on the tag.

Class 6P Macro Photography
Photographs should be an extreme close-up photo of any part of the rose or rose plant. Color, Black & White, Sepia, or combinations of these are permitted in this class.

Class 7P A Rose By Any Other Name.

A photo that does not fit in classes 1P-6P. Examples: rose hips, foliage, roses with side buds, multiple sprays, bouquets, a rose in a vase, an individual rose plant, a rose activity, seedlings, critters in the garden, part of a rose bush with companion plants, odd growth.

Thank You to our Sponsors:

EAST BAY NURSERY

2332 San Pablo Avenue
Berkeley, CA 94702
510.845.6490 eastbaynursery.com

MCDONNELL NURSERY

196 Moraga Way
Orinda, CA 94563
925.254.3713 mcdonnellnursery.com

GRAND LAKE ACE GARDEN CENTER

4001 Grand Avenue
Piedmont, CA 94610
510.652.9143 oaklandcahardware.com

FLOWERLAND

1330 Solano Avenue
Albany, CA 94706
510.526.3550 flowerlandshop.com

CURIOUS FLORA NURSERY

730 Market Street
Richmond, CA 94801
341.215.8734 curiousflora.com

BERKELEY HORTICULTURAL NURSERY

1310 McGee Avenue
Berkeley, CA 94703
510.526.4704 berkeleyhort.com

VISTA ROOM

Trophy Table (on window wall)

--	--	--	--	--	--	--	--	--	--

--

JUDGING TABLES

Youth		Judges' Entries	
Y2	Y1	J9	J1
600	700	710	800-820
Climbers		Shrubs	
		OGRs	

Top Photos	23	Q1
400	410	510
Miniatures and MiniFloras		

Floribundas		Hybrid Teas and Grandifloras	
210	200	140	130
100		110	120
Hybrid Teas and Grandifloras			

Polyanthas		Floribundas	
300	220	210	
100		100	
Hybrid Teas and Grandifloras			

Challenge Classes

19	18	17	16	15	14	13	12	11	10	9	8	7	6	5
Challenge Classes														

F1	Fragrance
F2	

N1	↓	N4
O1	↓	O4
S1	↓	S3
W1		W2
Z1		
1		
2		
3		
4		

Photography

HALLWAY

22
21
20

QUEENS FROM PREVIOUS EBRs ROSE SHOWS

HT/GR

American Honor
Angel Wings
Bewitched
Black Magic
Camara
Charlotte
Chrysler Imperial
Dick Clark
Duet
Elina
Folklore
Gold Medal
Granada
High Sheriff
Honor
Hot Princess
John F. Kennedy
John Waterer
Kardinal
King's Ransom
Loving Memory
Lynn Anderson
Marilyn Monroe
Mikado
Mister Lincoln
Montezuma
National Trust
Neptune
Neville Chamberlin
Oklahoma
Opening Night
Orlando
Parole
Pascali
Peace
Peter Frankenfeld
Princess Margaret
of England
Pristine
Ring of Fire
Signature

Silver Jubilee
Silver Lining
Spring Break
Sunstruck
Whiskey Mac

FL Sprays

Anabell
Bill Warriner
Brilliant Pink
Cathedral
Chihuly
Dorothy
Wheatcroft
Ebb Tide
Escapade
French Lace
Gene Boemer
George Bums
Hot Cocoa
Iceberg
Impatient
Irish Mist
Margaret Merril
Marmalade Skies
Odyssey
Old Master
Orangeade
Playboy
Pleasure
Poulson 's Pearl
Pricilla Burton
Roman Holiday
Rose Parade
Sexy REXY
Sparkle 'n' Shine
Sweet Vivian
Tony Jacklin
Trumpeter
White Licorice

Miniatures

Admirable
Beauty Secret
Center Gold
Easter Morning
Eternal Flame
Fairhope
Helen Boehm
Hot Tamale
Incognito
Irresistible
Joy
Kristin
Little Jackie
Loving Touch
Luis Desamero
Magic Carrousel
Minnie Pearl
Miss Flippins
Puppy Love
Rise 'n' Shine
Ruby Pendant
Soroptimist
International
Snow Bride
Sweet Revenge
Toy Clown

Minifloras

Dr. John Dickman
Flawless
Foolish Pleasure
Jolene Adams
Leading Lady
Liberty Bell
Peter Cottontail
Solar Flair
Tammy Clemons
Whirlaway

Modern Shrub

Distant Drums
Falstaff